

Carmen's Soil Investigation

Glue soil microscope slide here

Sample 1

Location

Color _____

Texture _____

Sample Contains:

- ☐ rocks
- ☐ sand
- ☐ powder
- ☐ humus
- ☐ moisture
- ☐ decomposers

Test: ✓=yes x=no

- ☐ ball test
- ☐ ribbon test

Magnification Observation Description

This sample _____

Glue soil microscope slide here

Sample 2

Location

Color _____

Texture _____

Sample Contains:

- ☐ rocks
- ☐ sand
- ☐ powder
- ☐ humus
- ☐ moisture
- ☐ decomposers

Test: ✓=yes x=no

- ☐ ball test
- ☐ ribbon test

Magnification Observation Description

This sample _____

Soil Description Word Bank (brainstorm with your class, words describing soil)



Carmen's Soil Investigation

Glue soil microscope slide here

Sample 3

Location

Color _____

Texture _____

Sample Contains:

- ☐ rocks
- ☐ sand
- ☐ powder
- ☐ humus
- ☐ moisture
- ☐ decomposers

Test: ✓=yes x=no

- ☐ ball test
- ☐ ribbon test

Magnification Observation Description

This sample _____

Glue soil microscope slide here

Sample 4

Location

Color _____

Texture _____

Sample Contains:

- ☐ rocks
- ☐ sand
- ☐ powder
- ☐ humus
- ☐ moisture
- ☐ decomposers

Test: ✓=yes x=no

- ☐ ball test
- ☐ ribbon test

Magnification Observation Description

This sample _____

Soil Description Word Bank (brainstorm with your class, words describing soil)





Ernie's Salsa Garden Chart

When to sow and How long to grow

Using information from the seed packets, can you help Ernie figure out how long it will take to grow his plants in order for him to harvest them by Earth Day on April 22nd.

Type of plant	How long until harvest?	Ernie should plant these indoors by (date)
Tomato	72-82	
Pepper		
Cilantro		
Onion		

If you know when to sow you can help your plants grow!

*Your packets may vary

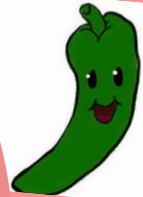
Tomato Seeds



Directions:
Start indoors in a well-lighted warm area. Keep moist. Shelter plants outside for a week before transplanting outdoors.

Sow: 1/4 inch deep
Germination: 7-10 days
Time to Harvest: 72-82 days
Adult plants: 3-4' apart

Pepper Seeds



Directions:
Start indoors in a well-lighted warm area. Keep moist. Thin to one plant when they are 3" tall.

Sow: 1/4 inch deep
Germination: 10-12 days
Time to Harvest: 70-90 days
Adult plants: 2' apart

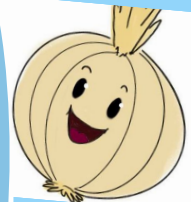
Cilantro Seeds



Directions:
Start indoors in a well-lighted warm area. Keep moist. Thin when 3 inches tall. Begin harvesting when multiple sets of leaves appear on stems.

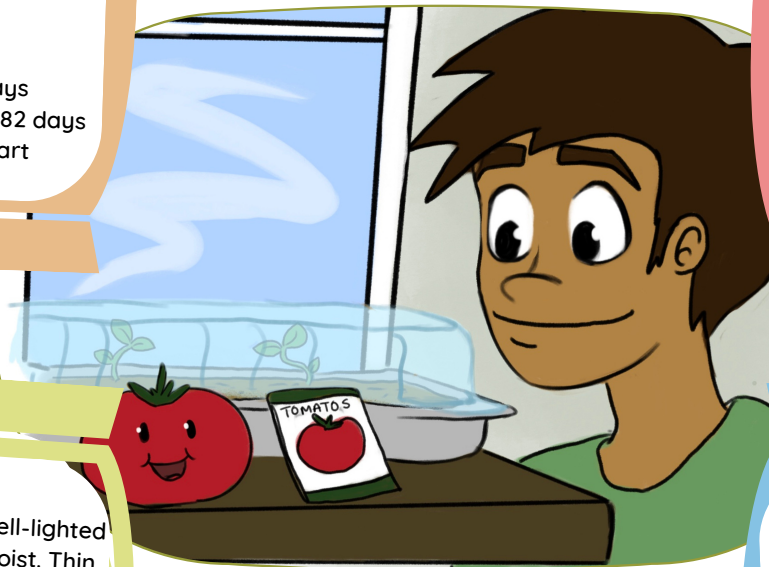
Sow: 1/4 to 1/2" deep
Germination: 7-10 days
Time to Harvest: 50-55 days
Adult plants: 2' apart

Onion Seeds



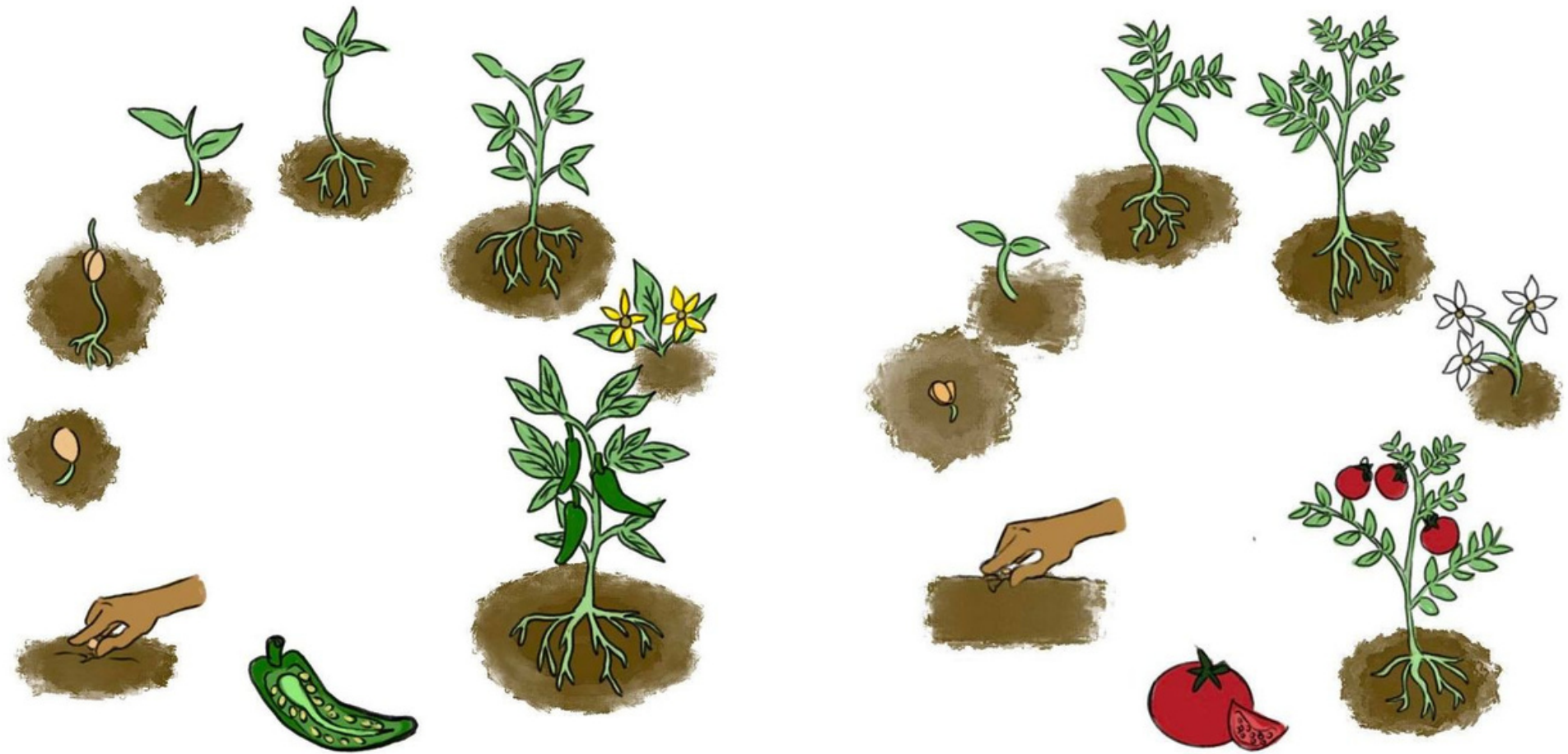
Directions:
Start indoors in a well-lighted warm area. Keep moist. Transplant outdoors. Harvest after plant flowers and dies

Sow: 1/2 inch deep
Germination: 10-12 days
Time to Harvest: 100 days
Adult plants: 1' apart



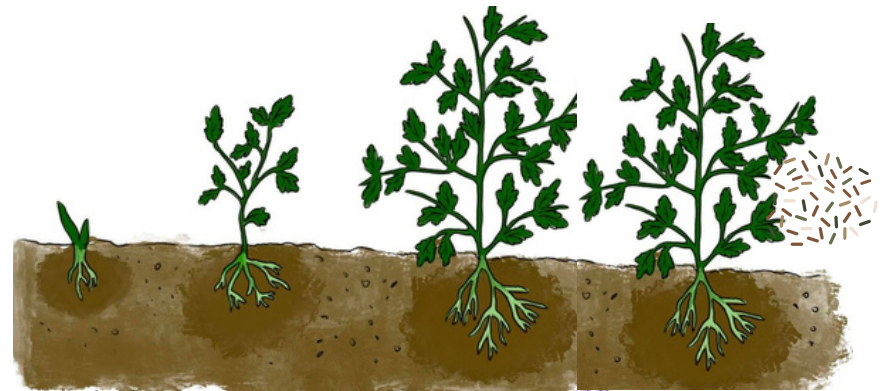
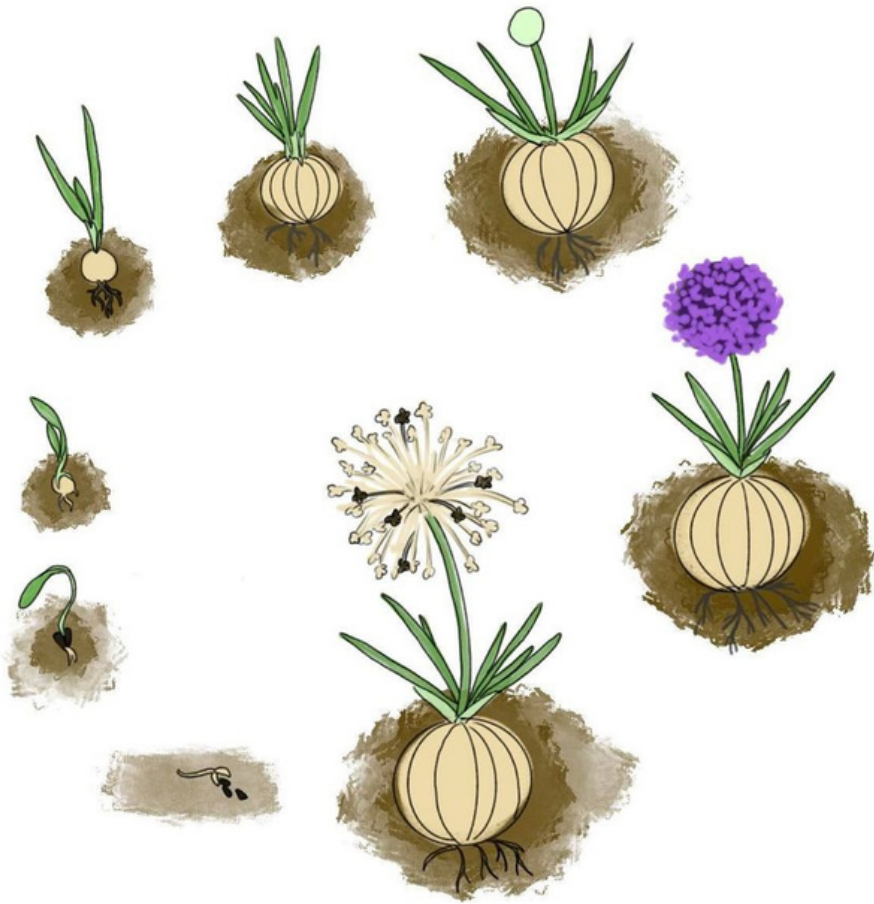
Salsa Plant Life Cycles

label: germinate, sprout, seedling, young plant, adult plant



Salsa Plant Life Cycles

label: germinate, sprout, seedling, young plant, adult plant

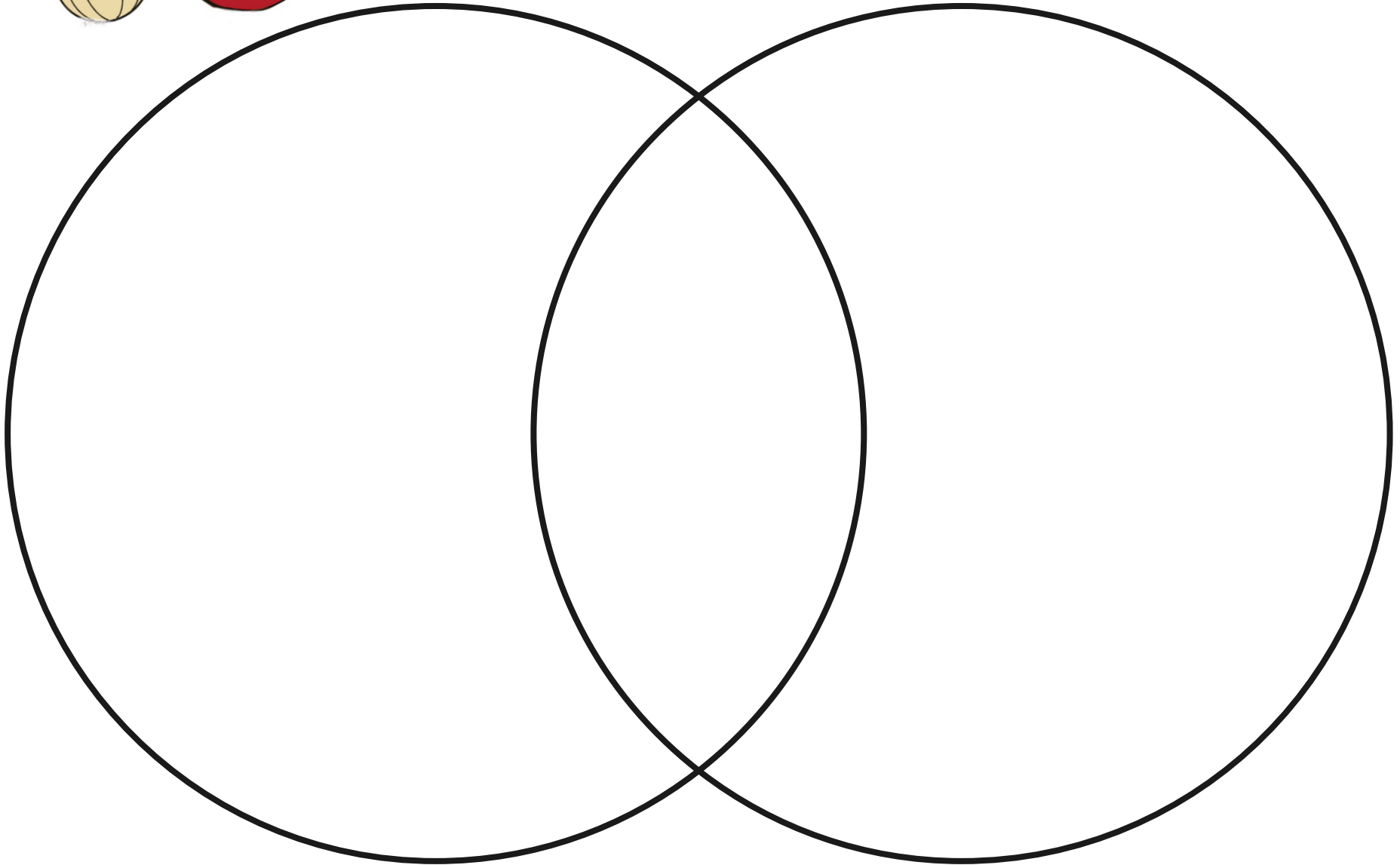




Comparing Life Cycles of Plants

How are we the same and How are we different

Choose two plants to compare and contrast using a Venn Diagram





Comparing Life Cycles of Plants

Comparing multiple attributes using a **MATRIX**

Use the Matrix chart to show what the 4 plants have in common

Type of plant	Produces a fruit					
Tomato	✓					
Pepper	✓					
Cilantro	✗					
Onion	✗					